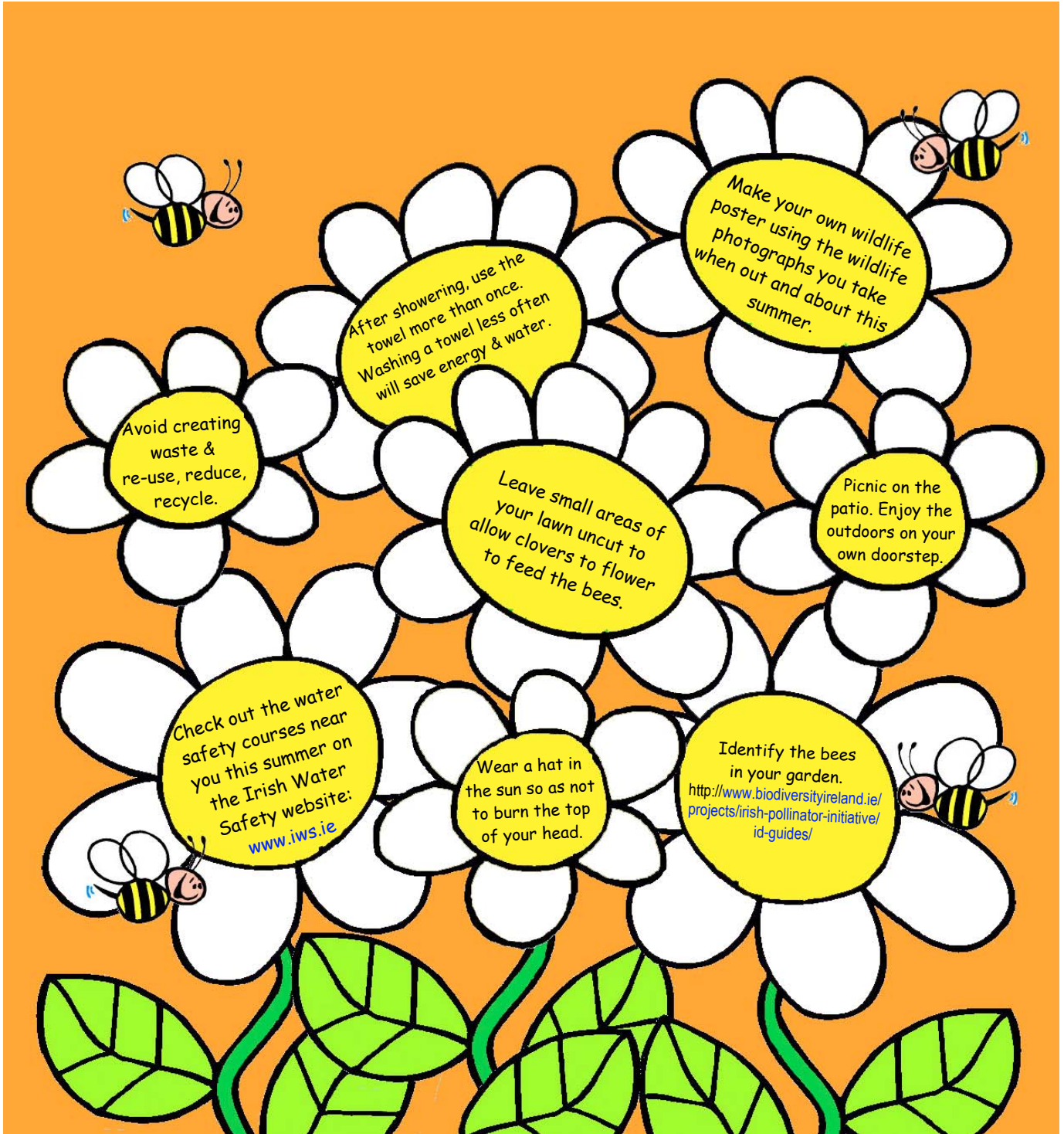


# Nature's Noticeboard!

## Summer 2016



Sherkin Island Marine Station would like to thank the following for their help with this newsletter, especially Úna FitzPatrick, John Joyce, Michael Ludwig, Eimear Murphy, Keelin Murphy, Robbie Murphy, Borbála Vízkelety and Jez Wickens.



We appreciate support from the EPA and the Geological Survey of Ireland toward the newsletter.

© 2016 Sherkin Island Marine Station & its licensors. All rights reserved.