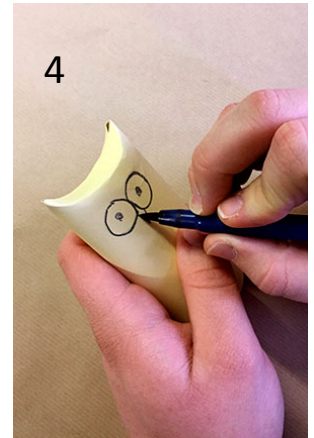
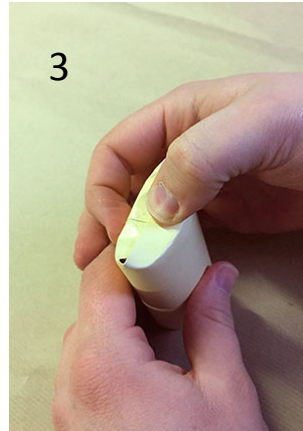
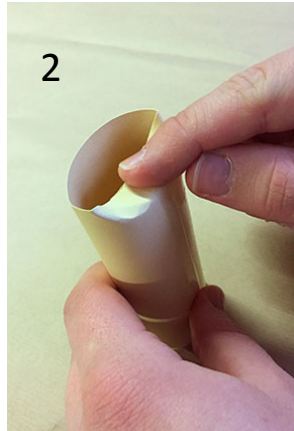
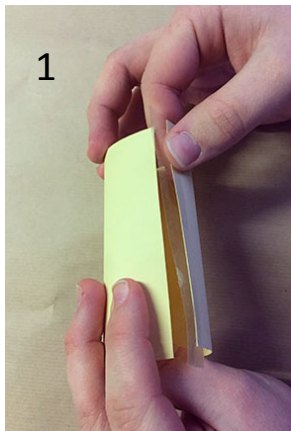


Activity Page



A Parliament of Owls

Here is a very simple activity for making your own parliament of owls.



1: Cut a rectangle of card 12 cm x 9 cm. Slightly overlap short edges and tape/glue together to create a tube.

2: With the taped or glued part facing you, fold in the top edge of the tube until it is crescent shaped.

3: Turn the tube around and fold in the other half of the edge over the previous one. Glue in place.

4: Decorate the owl as you wish. You can use markers or paints and stick on wings or googly eyes.



TIP: Increase the size of the card to make a bigger owl.

You will need: Card; Tape; Markers or paints; Scissors; Ruler; Glue