

Activity

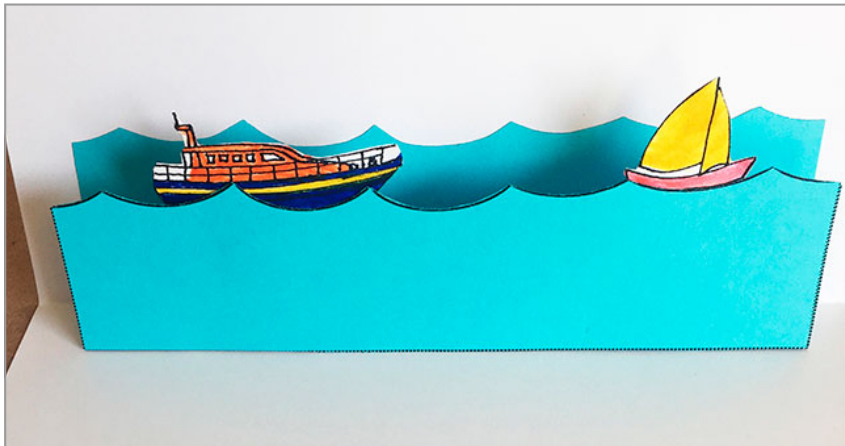
Make a Pop-Up "Rescue" Card

YOU WILL NEED

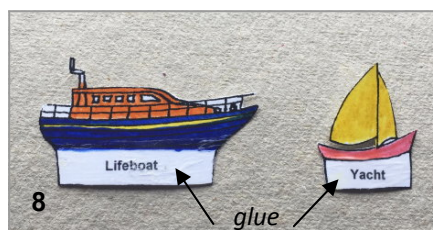
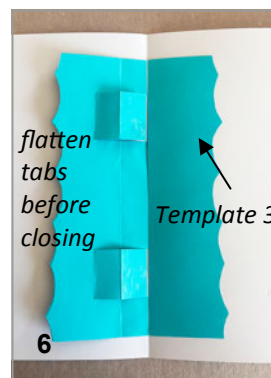
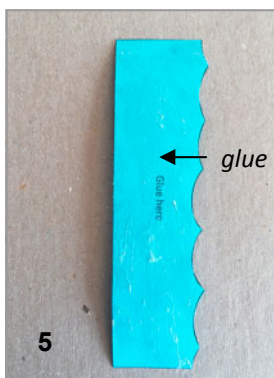
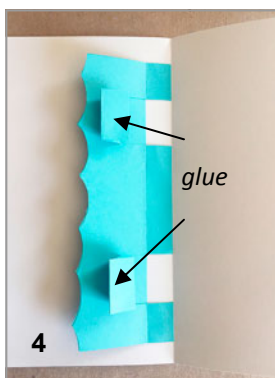
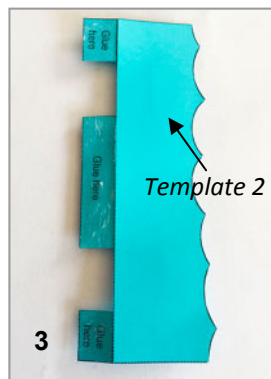
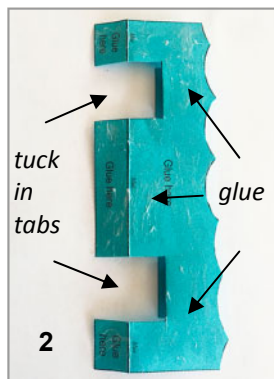
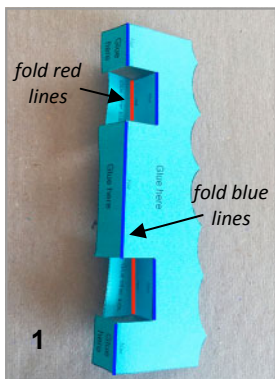
- Coloured A4 card
- White A4 card
- Scissors
- Glue stick
- Markers
- Templates on p17

Print or trace the templates on page 17. Cut along the dotted lines and along the top of the waves. Fold the A4 sheet of white card in half.

1. Fold the red and blue solid lines on Templates 1 as directed.
2. Tuck tabs in and put glue on Template 1 where it says "Glue Here". Place a scrap of paper underneath the section to be glued to stop glue going everywhere.
3. Place Template 2 on top of Template 1, lining up the top of the waves. Press down.
4. Stick both Templates 1 and 2 down on to the centre of the A4 card. Line up the glued edge with the centre crease of the card. Put glue on the ends of the tabs, slipping scrap paper underneath glue neatly.
5. Put glue on all of one side of Template 3.
6. Stick Template 3 down on the opposite side of the crease of the white card. Flatten the tabs and gently close the card and press down. Allow the glue to set for a minute.
7. Gently open the card and all the layers should open together.
8. Colour in the lifeboat and yacht and put glue on the front of the tabs. Stick each on the inside of the wave.



Images courtesy of Susan Murphy-Wickens



TIP

- When gluing, be as careful as possible so that only the necessary parts of the card stick together, otherwise layers might not separate properly.