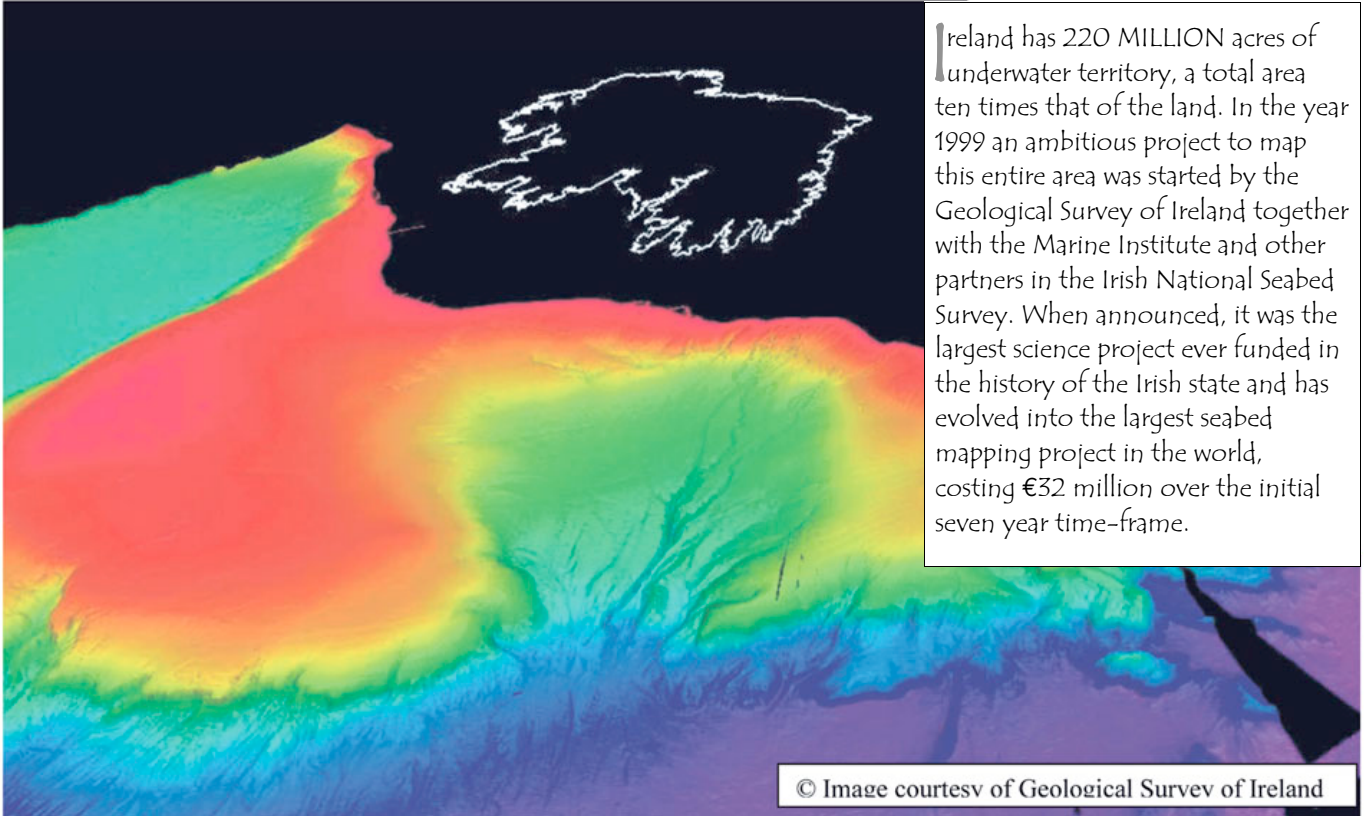
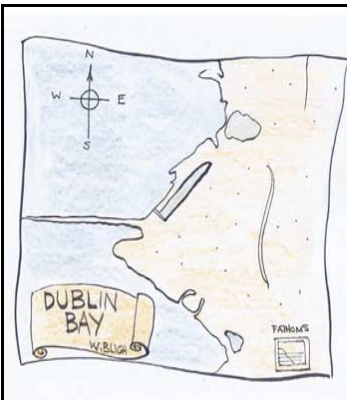


Conservation

220,000,000 Acres Under the Sea...



Ireland has 220 MILLION acres of underwater territory, a total area ten times that of the land. In the year 1999 an ambitious project to map this entire area was started by the Geological Survey of Ireland together with the Marine Institute and other partners in the Irish National Seabed Survey. When announced, it was the largest science project ever funded in the history of the Irish state and has evolved into the largest seabed mapping project in the world, costing €32 million over the initial seven year time-frame.



Until recently, most of the charts around the Irish coast dated back to the time of Captain William Bligh, commander of the infamous HMS Bounty. Bligh was a master mariner and compiled many of the charts of Irish waters, including detailed maps of Dublin Bay.

Captain Cackle's Log



Welcome aboard shipmates!
Together, we'll be taking a look at the world's greatest natural resource -- the sea!

Words & pictures by John Joyce
www.captaincackle.com
© John Joyce 2004

Plumbing the depths . . .

In Captain Bligh's day, depths were measured with a rope with a lead sinker at the end. Sometimes the lead weight had soft grease on the end to pick up a sample of the bottom and tell if it was rock, pebbles or sand. Nowadays depths are measured by bouncing sound waves off the bottom to give a detailed three-dimensional picture of the seabed. Sound pictures from the bottom can tell surveyors not only how deep the water is but what the bottom is made of.

Check out these cool websites:

The Irish National Seabed Survey www.gsiseabed.ie

The Marine Institute www.marine.ie

Captain Bligh: www.themagicofcornwall.com/Pages/history/bligh.htm



© 2009 Sherkin Island Marine Station & its licensors. All rights reserved.